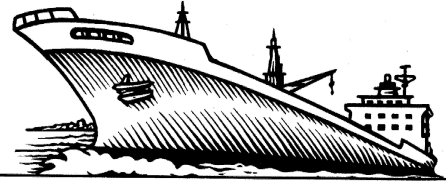


# PORT MANATEE

## Commerce Center



2300 SOUTH DOCK ST. • PALMETTO, FLORIDA 34221 • TELEPHONE (941) 729-1010 • FAX: (941) 729-1314

**\*\* FOR LEASE \*\***

### **Warehouse Storage - 79,800 SF**

#### **Building B – 2320 South Dock St.**

Located outside the security gates of Port Manatee

30 minutes from Port of Tampa

Foreign Trade Zone #169

Convenient to Manatee, Sarasota, Hillsborough and Pinellas counties

Three miles / non-stop access to I-75 + I-275

60' wide cargo door on the east end of the building for easy access

24' wide bi-fold aircraft door

Eleven 12' x 14' roll-up doors with grade level loading

Twelve doors with dock level loading

26' Eave Height (21' to 25' clear height)

Clear span (no poles) for unobstructed interior mobility

300 ft<sup>2</sup> Office Mezzanine with A/C

Six restrooms

400A Electric (480/277V)

130 mph rated building

Skylights and Fully Fire Sprinklered

24 Hour Access

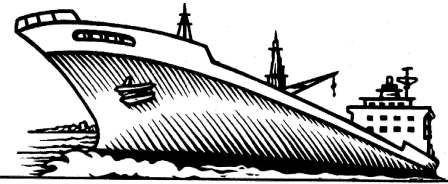
Rail served by CSX Transportation

[www.PortManateeCommerceCenter.com](http://www.PortManateeCommerceCenter.com)

Over →

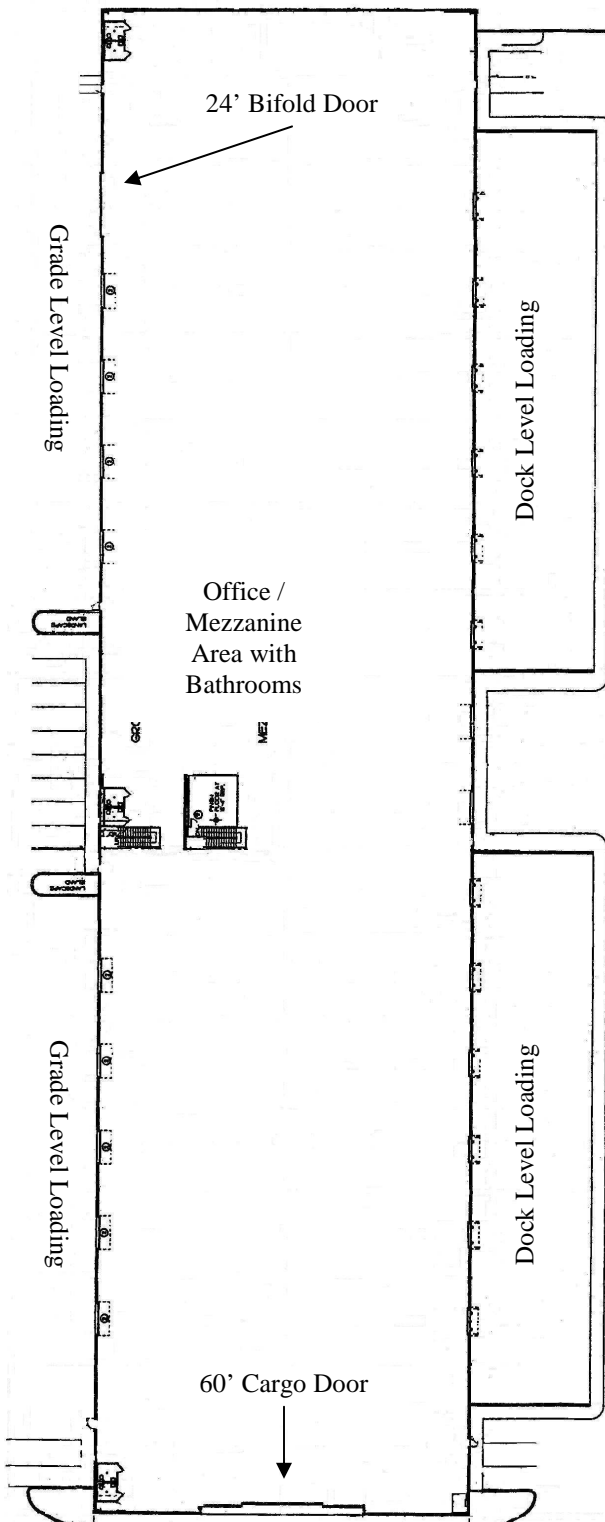


# PORT MANATEE Commerce Center

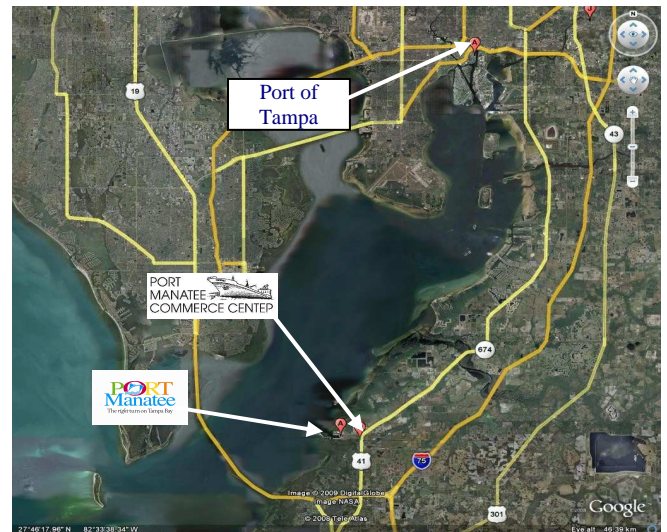


2300 SOUTH DOCK ST. • PALMETTO, FLORIDA 34221 • TELEPHONE (941) 729-1010 • FAX: (941) 729-1314

## Floor Plan



Aerial Photo



Location Map

Contact Kevin Button  
941-729-1010

[kevin@PortManateeCommerceCenter.com](mailto:kevin@PortManateeCommerceCenter.com)

[www.PortManateeCommerceCenter.com](http://www.PortManateeCommerceCenter.com)

Over →